



SOFTWARE CORP

EdgeSentry

EDGESENTRY IS A NETWORK APPLIANCE FOR MONITORING, HARDENING, SECURING AND DOCUMENTING YOUR SECURITY NETWORK.

- Easy to install
- Self learning
- Simplified network hardening
- Provides active security
- Monitors UPS health
- Switch monitoring and control

Security Alerts

- unauthorized devices
- off-network connections
- use of unsafe protocols
- detection of spoofed MAC addresses
- Network switch tamper

Communication Alerts

- unresponsive devices
- changes in device behavior
- changes in network topology
- UPS change of state, trouble

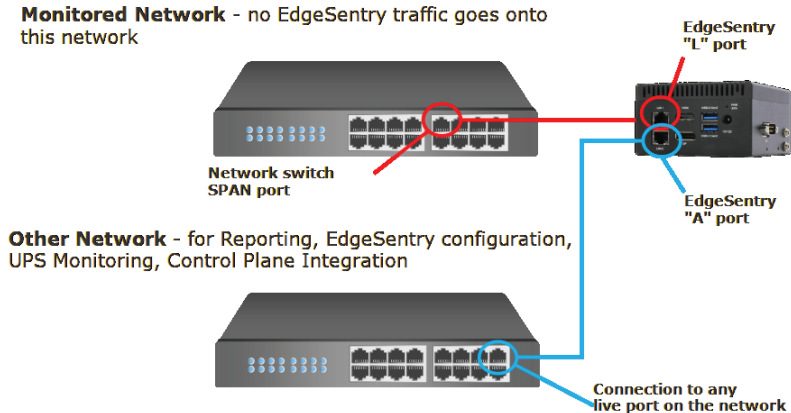
Isolation Mode

A “one-click” setting that prevents EdgeSentry from putting any packets onto the monitored network.

Monitoring

EdgeSentry can report alerts and back up it's critical information simultaneously to two network receivers. Each receiver can store up to 70 remote EdgeSentry sites. In case of a network incident, each receiver contains data critical for a forensic audit, including a full list of all devices that have communicated on the network, when they joined the network and every device and protocol they have used or connected to while on the network.

Monitored Network - no EdgeSentry traffic goes onto this network



Contact us:

Email: sales@lmnsoftwarecorp.com

Web: lmnsoftwarecorp.com



SOFTWARE CORP

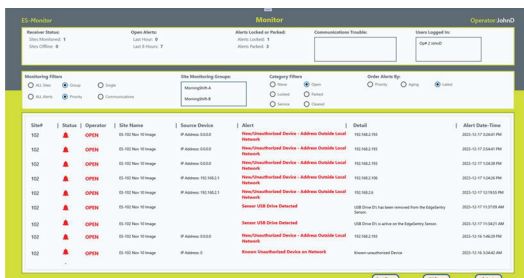
ES-Monitor

ES-MONITOR IS A SOFTWARE FOR MONITORING EDGESENTRY RECEIVERS, RESPONDING TO EVENTS AND TRACKING EVENT MANAGEMENT.



- Lightweight design - load multiple software instances on the same PC.
- Customized workflows, calendars and schedules for each site and alert type
- Phone, text and email contact with a single click from the workflow.
- Every operator alert response action is logged and time stamped

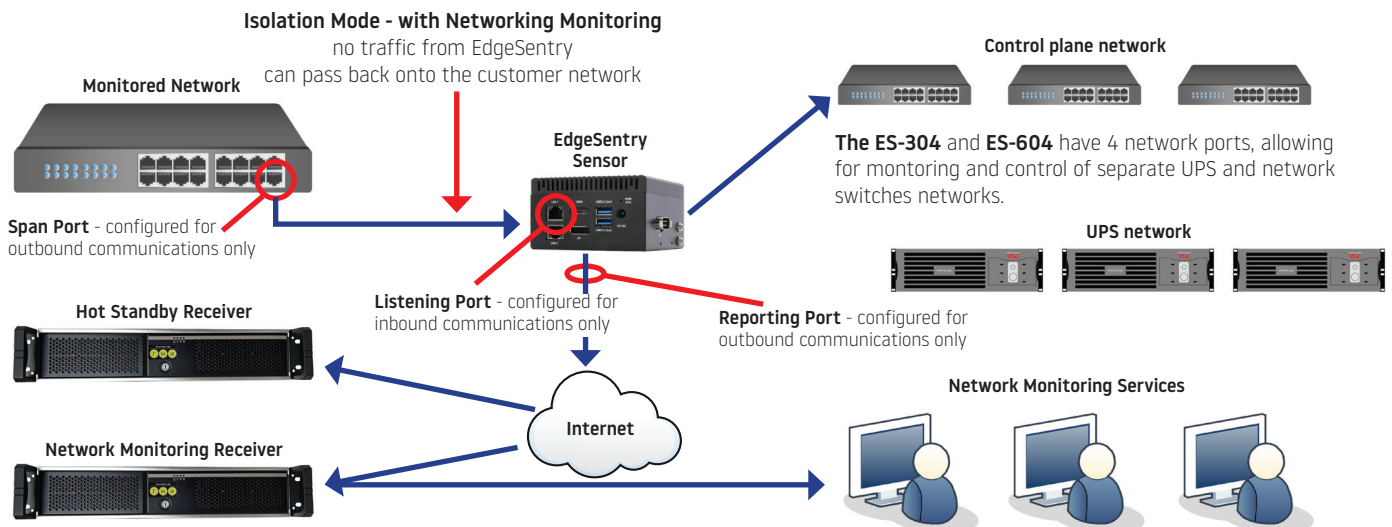
Monitoring Screen



Alert Management Screen



The complete system:



Contact us:

Email: sales@lmnsoftwarecorp.com

Web: lmnsoftwarecorp.com



SOFTWARE CORP

Network Hardening

EDGESENTRY IS A NETWORK APPLIANCE FOR MONITORING, HARDENING, SECURING AND DOCUMENTING YOUR SECURITY NETWORK.

Layer 2 switch interface:

- One Click - lock unused ports
- Check for default credentials
- Simplified security status display
- One Click - enable port security
- Simplified SNMPv3 setup
- One click - enable switch traps

Current Switch Status

Telnet Disabled: ●	New Credentials ●	Ports Locked: ●	Port Security Active: ●	SNMP V1 Disabled: ●	SNMP V3 Enabled: ●	Traps Set: ●	Changes Saved: ●	Archive / Restore ●
Disable Telnet	Edit Credentials	UnLock Ports Lock ports	Port Security Off Port Security On	Enable SNMP V1 Disable SNMP V1	Disable SNMP V3 Enable SNMP V3	Disable V3 Traps Enable V3 Traps	Save Changes	Archive/Restore

Switch Connection

EdgeSentry ES-304 and ES-604 have multiple ports, allowing for a dedicated connection to the control plane network. When each network switch is added to EdgeSentry, the user enables SNMPv3 with Authentication and Privacy, allowing for secure communications to the switch.

Current Switch Status

Ports Locked: ●	Port Security Active: ●	SNMP V1 Disabled: ●
UnLock Ports Lock ports	Port Security Off Port Security On	Enable SNMP V1 Disable SNMP V1

One Click Actions

Enable port security, lock all unused ports, disable telnet, disable SNMPv1 and change credentials from one menu. Red/Green status lights reflect the security posture of the switch.

Search any device

by MAC address, IP address or device name, and instantly locate the device's connection to the network and device details.

Find a network device

Search by Mac Address:

Search by IP Address:

Search by device name:

Search Results:

Switch Name: Shipping Area

Switch IP Address: 192.168.0.5

Port Number: 3

Device Name: IT Closet UPS

Device IP Address: 192.168.0.81

Device Mac Address: 020054E15D00

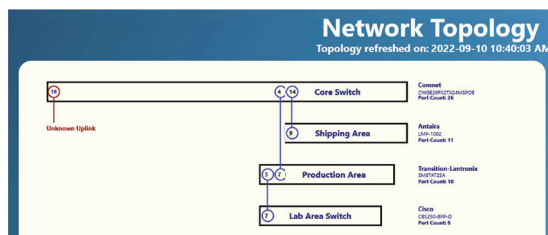
Device Manufacturer: LANSIP CORPORATION

Select port:

<input type="button" value="1"/>	<input type="button" value="2"/>	<input type="button" value="3"/>
<input type="button" value="4"/>	<input type="button" value="5"/>	<input type="button" value="6"/>
<input type="button" value="7"/>	<input type="button" value="8"/>	<input type="button" value="9"/>
<input type="button" value="0"/>		

Individual switch ports

can be PoE power cycled or locked/unlocked with three clicks.



Network Topology

When all switches are added to the network, EdgeSentry provides a topology map of the network and highlights any **unknown uplinks**.

Contact us:

Email: sales@lmnsoftwarecorp.com

Web: lmnsoftwarecorp.com



SOFTWARE CORP

Network Documentation

EDGESENTRY IS A NETWORK APPLIANCE FOR MONITORING, HARDENING, SECURING AND DOCUMENTING YOUR SECURITY NETWORK.

Generate reports instantly:

- All network devices, when they connected, device details, port info
- Devices organized by switch and switch port
- Device port and protocol report
- Generate reports instantly:
- UPS Status, UPS alert history
- Port locking and switch security
- Summary of Priority Alerts for a time span
- Summary of Connectivity Alerts for a time span

Reports

At the end of an installation, generate the site documentation in either text or csv format in a matter of minutes.

The screenshot shows a web interface titled "Reports" with a sub-section "Network Reporting". At the top, there is a "Report Filename (prefix):" input field and a "Choose Directory" button. Below this, the interface is organized into several sections, each with a "Generate" button and a "Completed" checkbox:

- Network Device Reports**
 - Network Devices List: CSV File: Off, Text File: Off
 - Switch-Port Devices List: CSV File: Off, Text File: Off
 - Device Port-Protocol Report: CSV File: Off, Text File: Off
- Network Stability Reports**
 - Device Uptime: CSV File: Off, Text File: Off
 - UPS Status: CSV File: Off, Text File: Off
 - UPS History: CSV File: Off, Text File: Off
- Network Security Reports**
 - Port Locking and Security: CSV File: Off, Text File: Off
- Alert History Reports**

At the bottom of the interface, there is a "Generate ALL CSV Reports" button.

After a site visit

New site documentation can be generated after each service call, either as individual reports or as a group. Highlight to your customers the state in which your technicians left the site, avoiding hard to resolve disputes.

Contact us:

Email: sales@lmnsoftwarecorp.com

Web: lmnsoftwarecorp.com